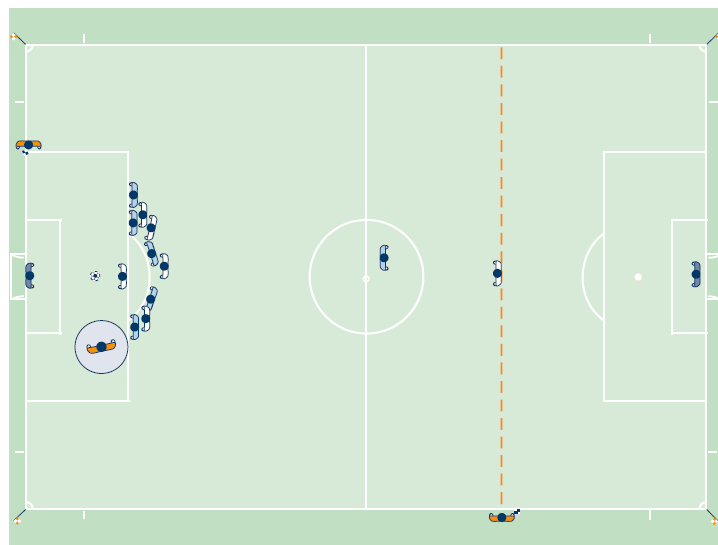


# Frequently Asked Questions

- 1) What should the assistant referee do if the **referee** is **leading** the decision making process i.e. awards a penalty kick without the need for the assistant referee to become involved?

In the event that the referee indicates a penalty kick, the assistant referee should move to the goal line and remain at the corner flag until the situation is calm. Only when the situation is calm, the assistant referee should move along the goal line to the intersection of the goal line and the penalty area, as shown in the picture below:

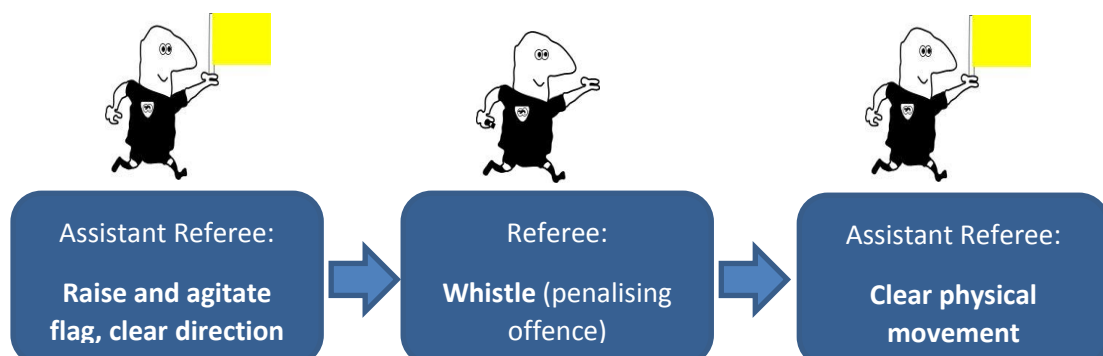


- 2) How should the **assistant referee** signal with their flag should they be **leading** the decision making process?

Before signalling for an offence, the assistant referee must determine that the offence was out of the view of the referee or the referee's view was obstructed – the flag signal should 'add value' to the decision making process and outcome.

Where the assistant referee needs to make a signal with their flag to indicate that an offence has taken place, the flag signal should be as follows:

- raise the flag with the same hand that will also be used for the remainder of the signal - this gives the referee a clear indication as to who was fouled
- agitate/wave the flag back and forth (avoiding any excessive or aggressive movement)
- use the electronic beep signal, and communication system if available



3) What does **clear physical movement** mean and how is this done?

Clear physical movement is a visible movement with purpose in a particular direction. For example if the assistant referee is leading the decision making process and the outcome is a penalty kick, following the flag signal of the assistant referee and the referee blowing their whistle to stop play and penalise the offence, the assistant referee will clearly move along the touchline with purpose towards the goal line.

The 'movement style' of the assistant referee should allow him/her to keep a view of the field of play, a controlled side-stepping movement or mid-pace jog whilst looking in field should be used. Sprinting should not be used for this movement.

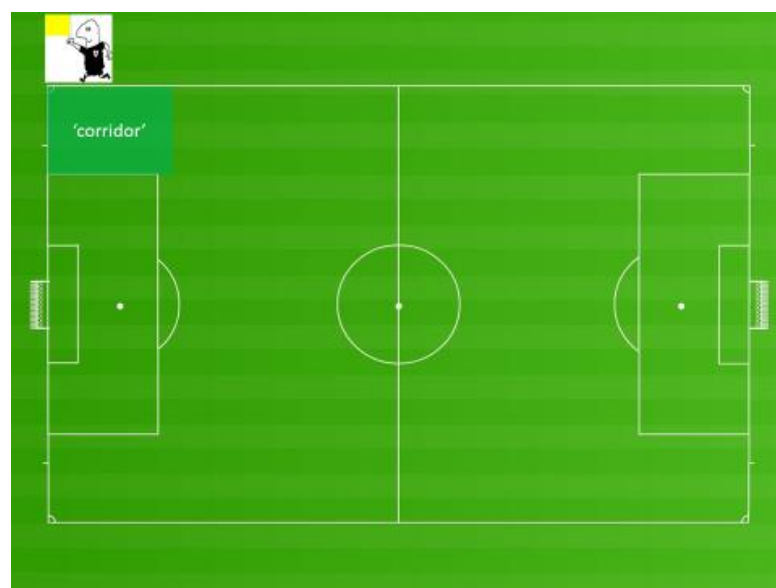
4) What does the assistant referee do if they are already standing at/near the corner flag when they make a flag signal to advise the referee that an offence has taken place?

In the event that the assistant referee is already positioned at/near the corner flag and they are required to make a flag signal and clear physical movement to assist the referee:

If a **penalty kick** is being indicated, the assistant referee should clearly signal with an agitated flag, followed by direction and then **stand still** positioned **behind the corner flag**.

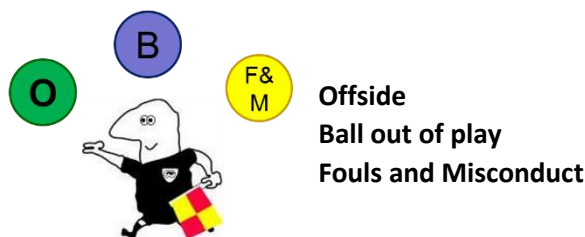
If the **offence** is close to but **outside** of the penalty area (the foul most likely to have occurred in the 'corridor' shown on the picture below), then the assistant referee should clearly signal with an agitated flag, followed by a direction and then a **visible and purposeful movement**, side-stepping along the touchline back towards the halfway line (it is not necessary to move all of the way to be level with the front edge of the penalty area – a clear movement of 5-6m is sufficient)

Where it is clear that the location of an offence is outside of the penalty area, the assistant referee should signal with an agitated flag as they would do for any other direct free kick, and remain stationary.



5) What should the assistant referee do if following a flag signal a confrontation between players develops?

At all times in the match the assistant referee is 'juggling' three priorities:



In a situation where player confrontation develops following a flag signal, the assistant referee must prioritise monitoring and management over the subsequent movement. The assistant referee can confirm to the referee the restart of play (penalty kick or direct free kick) following the confrontation being dealt with.

## Summary

There is no 'special' assistant referee flag signal for a penalty kick. When the foul is clearly **inside** the penalty area, if needed, the 'normal' indication for a foul should be followed by a clear physical movement to the goal line – **the flag should not be placed across the chest**. When the foul is **outside** the penalty area, if needed, the assistant referee should make a clear physical movement to a position level with the front edge of the penalty area.

These FA Guidelines are consistent with the approach that is documented in the Laws of the Game, a practice that is successfully used in Competitions outside of England, see below:

### 102 ASSISTANT REFEREE SIGNALS

#### **Fouls outside the penalty area**

When a foul is committed outside the penalty area (near the boundary of the penalty area), the assistant referee should make eye contact with the referee to see where the referee is positioned and what action he has taken. The assistant referee must stand in line with the penalty area and raise his flag if necessary.

In counter-attack situations, the assistant referee should be able to give information such as whether or not a foul has been committed and whether a foul was committed inside or outside the penalty area, which is a priority in any case, and what disciplinary action must be taken.

#### **Fouls inside the penalty area**

When a foul is committed inside the penalty area out of the vision of the referee, especially if near to the assistant referee's position, the assistant referee must first make eye contact with the referee to see where the referee is positioned and what action he has taken. If the referee has not taken any action, the assistant referee must raise his flag and use the electronic beep signal and then visibly move down the touch line towards the corner flag.